

FAMILY

MISSOURI

MARSHFIELD

SOUTHWEST

Churchill Apartments

664 Church Street, Marshfield, MO 65706
Office: 417.630.0203 | Fax: 417.630.0205



OVERVIEW

Home Type: Apartment

Bedrooms: 2–3

Bathrooms: 2

Other: 0 Garage

Size: 962–1155 ft²

Built In: 2014

Property Description

Churchill Apartments is a 48 unit community set in the heart of the Ozarks, in Marshfield, Missouri. The community features a library with computer stations, community garden, fitness center, clubhouse, playground, tot lot and off-street parking. The apartment homes include living area, dining, walk-in closet, master bath, storage, washer and dryers and kitchen appliances. Call to see your new home today.

Schools

District: Marshfield School District

Hubble Elementary
Webster Elementary
Shook Elementary
Marshfield Junior High
Marshfield High School

AMENITIES

Units:

Ceiling Fans
Dishwasher
Microwave
Oversized Closets
High Speed Internet Available
Full-Size Washer & Dryer Hookups
Extra Storage

Property:

Clubhouse
Fitness Center

CONNECT WITH US

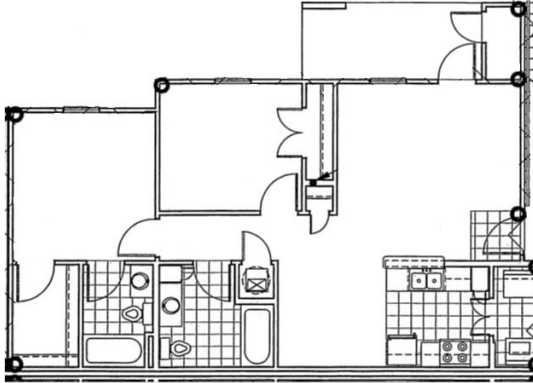
 @Wilhoit.Properties

 Wilhoit Properties, Inc.

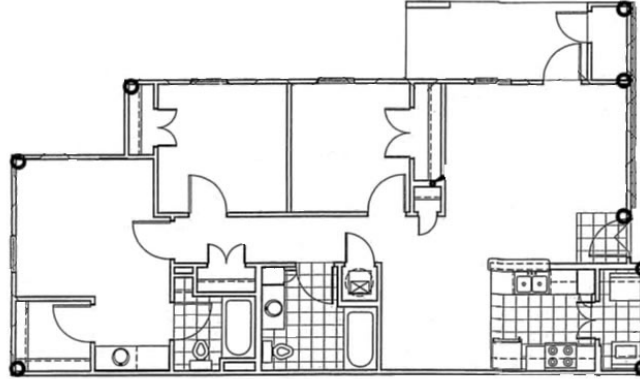
 Wilhoit Properties

FLOOR PLANS

2 Bedroom



3 Bedroom



OWNERSHIP & PARTNERS

Developer



Property Manager



Construction Management



Other Partners:

Churchill Housing LLC, Missouri Investment Partners XI, Raymond James Tax Credit Fund

CREDIT CARD PAYMENTS

The following credit cards are accepted forms of Rent Payment but are ONLY processed in person at Property Offices.

