

FAMILY

KANSAS

MAIZE

SOUTHWEST

Wedgewood

310 South Free King Highway, Pittsburg, KS 66762
Office: 620.231.8272 | Fax: 620.231.1824



OVERVIEW

Home Type: Apartment

Bedrooms: 2–3

Bathrooms: 2

Other: 0 Garage

Size: 989–1156 ft²

Built In: 2001

Property Description

Welcome to Remington Square, a 48 unit community located in Pittsburg, Kansas. This family-friendly community is within walking distance to public schools and features 2 and 3 bedroom floor plans, energy efficient appliances, children's playground and picnic area with bbq grills. The apartments homes participate in The Housing Choice Voucher Program designed to maintain affordable housing for residents. Please call to see your new apartment home today and experience Wilhoit Living.

Schools

District: Pittsburg USD #250

Meadowlark/Jordan Elementary School
Pittsburg Middle School
Pittsburgh High School

AMENITIES

Units:

Frost-Free Refrigerator w/ Ice Maker Unique Floor Plan Designs
Designer Color Scheme
Energy Efficient Appliances
Dishwasher
Garbage Disposal
Full Size Washer & Dryer Included

Property:

24-Hour Emergency Maintenance
Children's Playground
Picnic Area with BBQ Grills and Gazebo
Within Walking Distance to Public Schools

CONNECT WITH US

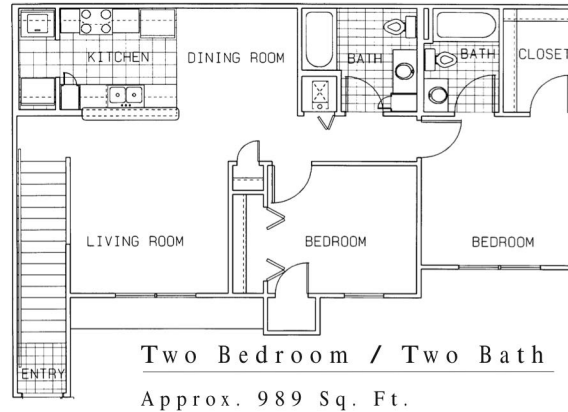
 @Wilhoit.Properties

 Wilhoit Properties, Inc.

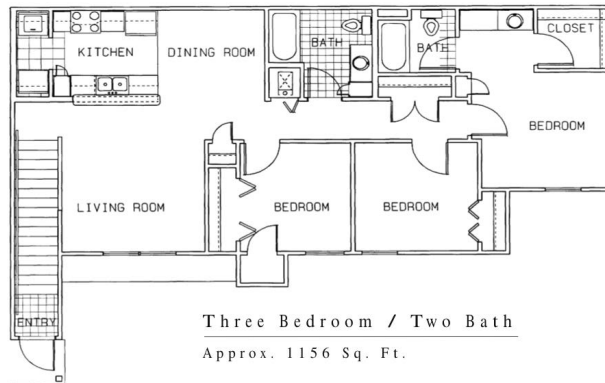
 Wilhoit Properties

FLOOR PLANS

2 Bedroom: 989 ft²



3 Bedroom: 1156 ft²



OWNERSHIP & PARTNERS

Developer



Property Manager



Construction Management



Other Partners:

Kansas Housing Resource Corporation, Alliant Capital, Guaranty Bank

CREDIT CARD PAYMENTS

The following credit cards are accepted forms of Rent Payment but are ONLY processed in person at Property Offices.

