

FAMILY

OKLAHOMA

GLENPOOL

SOUTHWEST



Whispering Plains

613 W. 146th Street, Glenpool, OK 74033

Office: 918-322-3029 | Fax: 918-322-3046



OVERVIEW

Home Type: Apartment

Bedrooms: 2–3

Bathrooms: 2

Other: 0 Garage

Size: 964–1131 ft²

Built In: 2012

Property Description

Rolling Meadows is a lovely community nestled in Glenpool, Oklahoma. The neighborhood features community center, business center, pavillion and playground. The apartment homes participate in The Housing Choice Voucher Program designed to maintain affordable housing for residents. Call to see your new home today.

Schools

District: Glenpool Public Schools

Glenpool Elementary

Glenpool Middle School

Glenpool High School

Glenpool Virtual School

AMENITIES

Units:

Restricted Entry

Full-Size Washer & Dryer Included

Built In Microwave & Self-Cleaning Ovens

Ceramic Tile

Refrigerator with Ice Maker

Patio or Balcony Storage

Property:

Cardio Fitness Center

24-Hour Emergency Maintenance

Computer Center with Library

Community Lounge with Kitchen

Covered Picnic Area with Grills & Tables

Planned Activities

Elevator, Pet Friendly

CONNECT WITH US

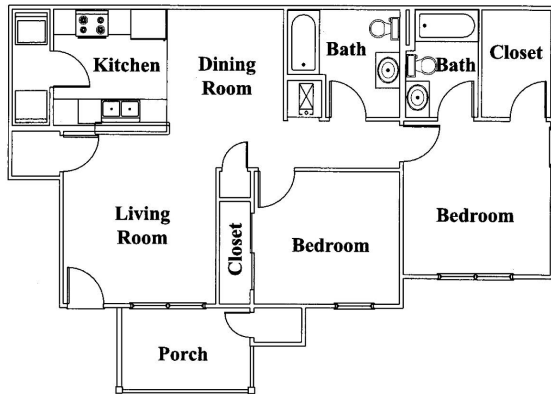
 @Wilhoit.Properties

 Wilhoit Properties, Inc.

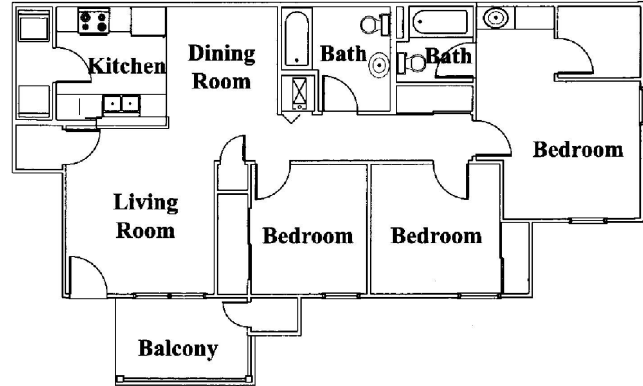
 Wilhoit Properties

FLOOR PLANS

2 Bedroom: 964 ft²



3 Bedroom: 1134 ft²



OWNERSHIP & PARTNERS

Developer



Property Manager



Construction Management



Other Partners:

Raymond James

CREDIT CARD PAYMENTS

The following credit cards are accepted forms of Rent Payment but are ONLY processed in person at Property Offices.

