

FAMILY

MISSOURI

LEBANON

SOUTHWEST

Sundance Apartments

1031 Ivey Ln, Lebanon, MO 65536

Office: 417.533.7604 | Fax: 417.533.7605

Email: sundancelebanon@wilhoitproperties.com



OVERVIEW

Home Type: Apartment Homes

Bedrooms: 2–3

Bathrooms: 2

Other: No Garage

Size: 828–926 ft²

Built In: 1998

Property Description

Welcome to Sundance Lebanon! This property is perfectly placed to offer easy access to restaurants, shopping and grocery stores. Come play sand volleyball, grill out or play on the playground. Our apartment homes are spacious and come with all appliances, washer and dryers and we do pay water, sewer and trash. Come home to Sundance Lebanon!

AMENITIES

Parking

Picnic Area with BBQ Grills

Playground

Sand Volleyball Court

On-site Property Management 24

Hour Emergency Maintenance

Water & Trash Included

Schools:

Lebanon R3 School District

CONNECT WITH US

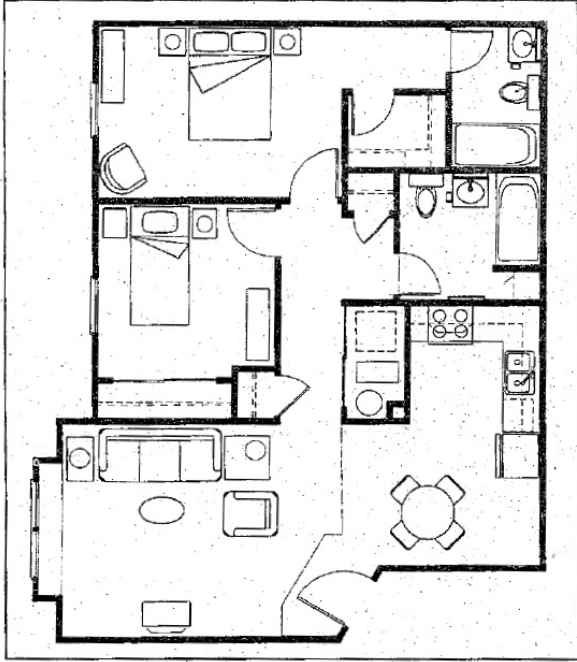
 @Wilhoit.Properties

 Wilhoit Properties, Inc.

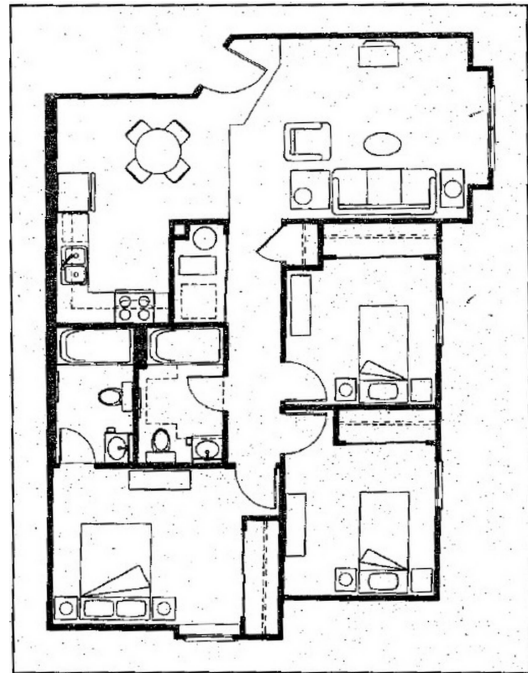
 Wilhoit Properties

FLOOR PLANS

Two Bedroom Two Bath 828 sq ft



Three Bedroom Two Bath 926 sq ft



OWNERSHIP & PARTNERS

Property Manager



Other Partners:

Missouri Housing Development Commission