

FAMILY

ALABAMA

DOTHAN

SOUTHEAST

Alabaster Bay Apartments

291 Alabaster Drive Dothan, Alabama 36301

Office: 334.794.0459 | Fax: 334.794.0479



OVERVIEW

Home Type: Apartment Homes

Bedrooms: 2–4

Bathrooms: 2

Size: 990–1292 ft²

Built In: 1999

Property Description

Welcome to Alabaster Bay Apartment Homes, located in Dothan, Alabama. The apartment homes feature great amenities including 9 foot ceilings, ceiling fans, breakfast bar, central heat & air, dishwasher, carpeted floors, cable ready and extra storage. Our beautifully landscaped community offer residential amenities i.e. clubhouse, business center, basketball court and children's play area.

Schools

District: Dothan City Schools

AMENITIES

Units:

Ceiling Fans
Generous Closet Space
Washer & Dryer Connections

Property:

24-Hour Emergency Maintenance
Clubhouse
Children's Play Area
Basketball Court

CONNECT WITH US

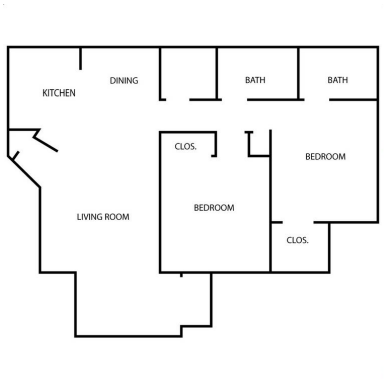
 @Wilhoit.Properties

 Wilhoit Properties, Inc.

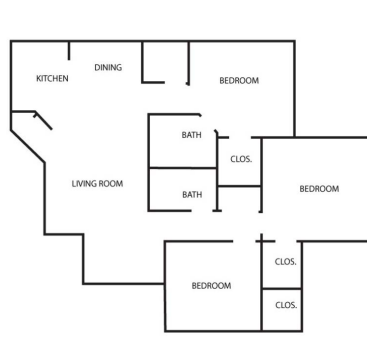
 Wilhoit Properties

FLOOR PLANS

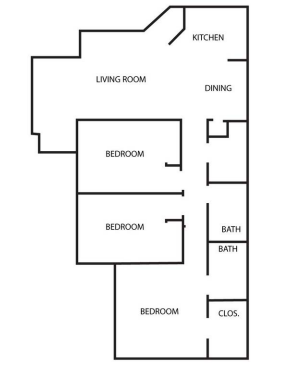
2 Bedroom: 990 ft²



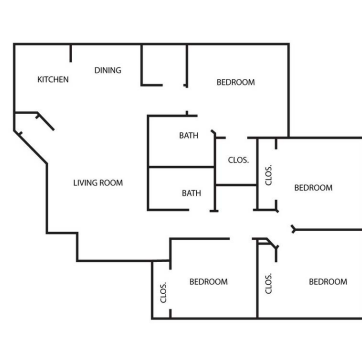
3 Bedroom: 1189 ft²



3 Bedroom: 1232 ft²



4 Bedroom: 1292 ft²



OWNERSHIP & PARTNERS

Property Manager



M

CREDIT CARD PAYMENTS

The following credit cards are accepted forms of rent payment in the Residential Portal.

