

FAMILY

MISSOURI

SPRINGFIELD

SOUTHWEST

Rosewood Estates

604 E. Sunset Street, Springfield, MO 65807
Office: 417.520.0660 | Fax: 417.865.6858



OVERVIEW

Home Type: Single Family

Bedrooms: 2–3

Bathrooms: 2

Other: 2 Garage

Size: 1269–1609 ft²

Built In: 2003

Property Description

Rosewood Estates is a 32 single family home community with a great location near the Battlefield Retail, McDaniel Park, access to South Creek Greenway Trail, great schools and restaurants. Two and three bedroom layouts are available with generous closets, private patios, additional storage, garage with automatic openers and lawn maintenance.

Schools

District: Springfield R-XII

Cowden Elementary School

Pershing Middle School

Parkview High School

AMENITIES

Units:

Ceiling Fans
Whirlpool Appliances
Refrigerator with Ice Maker
Double Kitchen Sinks with Disposal
Generous Closet Space
Washer & Dryer Connections
Lawn Maintenance Provided
Private Patio
Garages with Automatic Openers

Property:

24-Hour Emergency Maintenance
Additional Storage

CONNECT WITH US

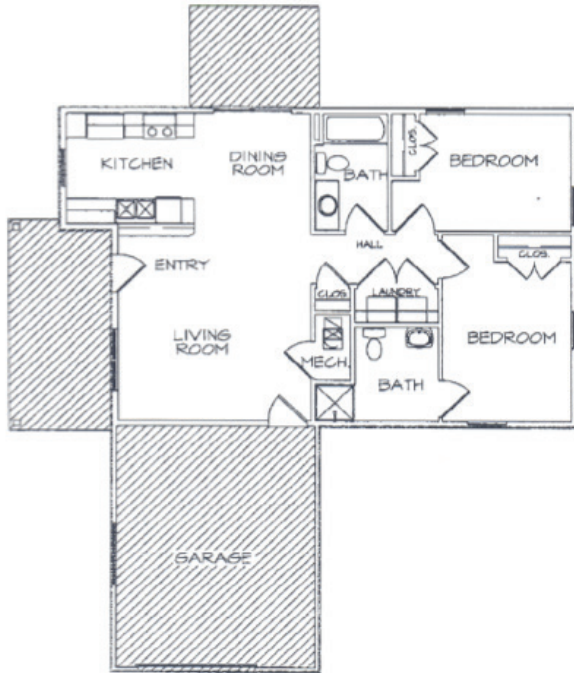
 @Wilhoit.Properties

 Wilhoit Properties, Inc.

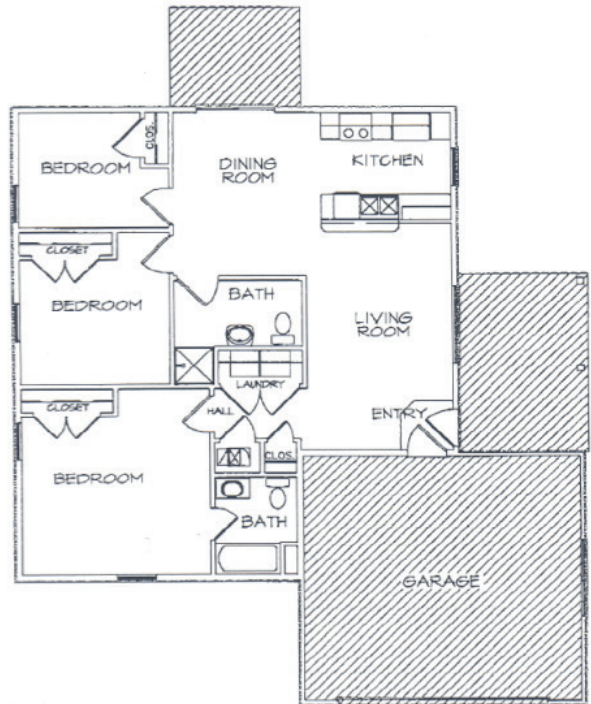
 Wilhoit Properties

FLOOR PLANS

2 Bedroom: 1269 ft²



3 Bedroom: 1609 ft²



OWNERSHIP & PARTNERS

Developer



Property Manager



Construction Management



Other Partners:

MO Housing Development Commission, Alliant Capital, City Of Springfield

CREDIT CARD PAYMENTS

The following credit cards are accepted forms of Rent Payment but are ONLY processed in person at Property Offices.

