

FAMILY

MISSOURI

SPRINGFIELD

SOUTHWEST

## Whittier Place Apartments

1002 Whittier Street Emporia, Kansas 66801

Office: 620.412.6706 | Fax: TBD

Email: whittier@wilhoitproperties.com



### OVERVIEW

**Home Type:** Apartment Homes

**Bedrooms:** 2–3

**Bathrooms:** 2

**Size:** 947–1147 ft<sup>2</sup>

**Built In:** 2018

#### Property Description

Whittier Place offers spacious 2 & 3-bedroom apartment homes. Enjoy a playground, outdoor picnic areas with grills, 1/2 basketball court, beautiful community room with computer stations, fitness center, an on-site staff and 24-hour emergency maintenance all for the convenience and use for our residents. Large open floor-plans with fully equipped kitchens featuring a garbage disposal, dishwasher, microwave oven, refrigerator and stove/oven. Each home also has ceiling fans and includes a washer/dryer. Beautifully located in Emporia, Kansas; Whittier Place is the perfect choice for your new affordable home.

#### Schools

**District:** Emporia Public Schools

### AMENITIES

#### Units:

Large Floor Plans

Ceiling Fans

Fully-Equipped Kitchen

Washer & Dryer Included

#### Property:

24-Hour Emergency Maintenance

Playground

Outdoor Picnic area with Grills

Basketball Court (half)

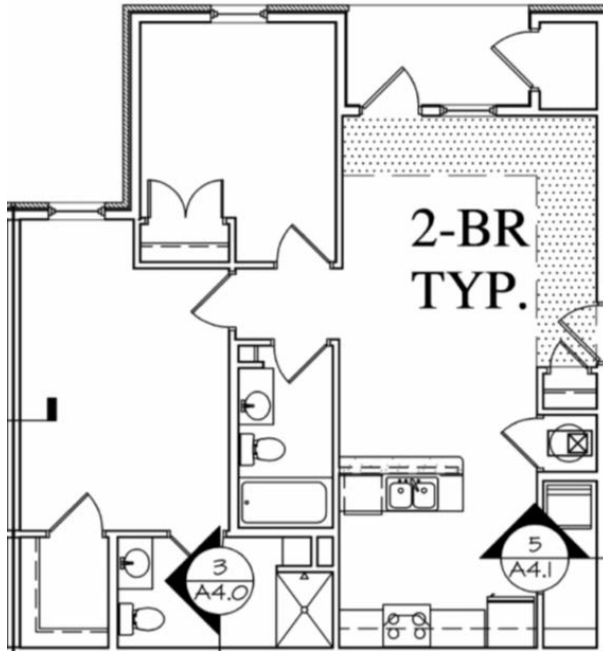
### CONNECT WITH US



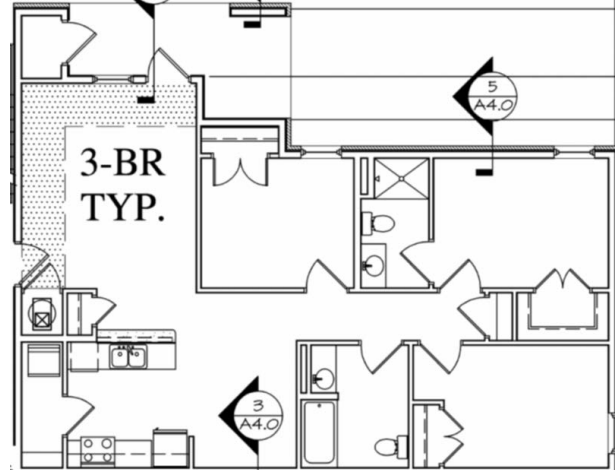
## FLOOR PLANS

---

2 Bedroom: 947 ft<sup>2</sup>



3 Bedroom: 1147 ft<sup>2</sup>



## OWNERSHIP & PARTNERS

---

Property Manager



## CREDIT CARD PAYMENTS

---

The following credit cards are accepted forms of Rent Payment but are ONLY processed in person at Property Offices.

