

SENIOR

GEORGIA

LAWRENCEVILLE

EAST

Redland Creek Villas

1340 Lawrenceville Highway, Lawrenceville, GA 30046

Office: 470.510.8115 | Fax: TBD

Email: redlandcreek@wilhoitproperties.com



OVERVIEW

Home Type: Apartment Homes

Bedrooms: 1–2

Bathrooms: 1–2

Size: 750–950 ft²

Property Description

Redland Creek Villas offers spacious 1 & 2 bedroom villas for seniors 55 years of age and older. Enjoy a cardio fitness center, covered picnic areas with grills, community garden, library media room with computers, beautiful community room, an onsite management staff and 24 hour carefree maintenance all for the convenience and enjoyment of our residents.

Large open floorplans featuring fully equipped kitchens with dishwasher, refrigerator, garbage disposal, stove/oven and microwave. Each home includes ceiling fans, full size washer/dryer, and a private patio/balcony with additional storage.

Schools

District: Gwinnett County Public Schools

AMENITIES

Villas:

Large open floor plans

Fully-equipped kitchens

Ceiling fans

Private patio or balcony with additional storage

Property:

24-Hour Emergency Maintenance Clubhouse

Cardio fitness center

Library media room with computers

Picnic area with BBQ grills

CONNECT WITH US



@Wilhoit.Properties



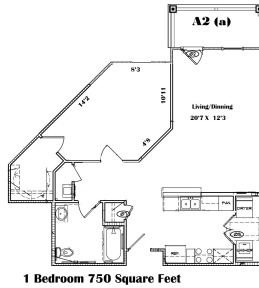
Wilhoit Properties, Inc.



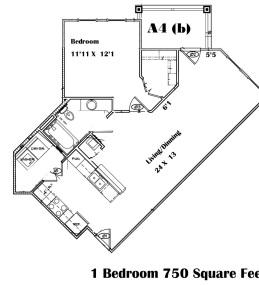
Wilhoit Properties

FLOOR PLANS

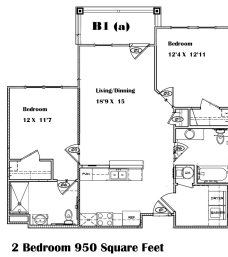
1 bedroom 750 ft²



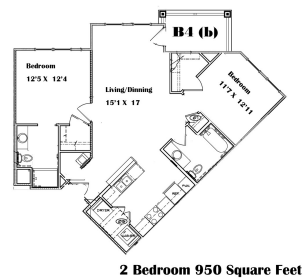
2 bedroom 950 ft²



2 bedroom 950 ft²



2 bedroom 950 ft²



OWNERSHIP & PARTNERS



Other Partners:
Centerline Capital

CREDIT CARD PAYMENTS

The following credit cards are accepted forms of Rent Payment in the Resident Portal.

